



**InterCafe 2004**

Print Manager

#### **InterCafe 2004**

This manual and the appendant software belong to blue image GmbH Germany and are subject to the appendant license agreements and copyright regulations.

© 2004 blue image GmbH  
Manual Version of August 8, 2006.

#### **Important Notice:**

The software is constantly being expanded and improved. Therefore it is possible that this manual is not yet showing all functions of the software. Please inform yourself about new versions of the manual on our homepage [www.blueimage.de](http://www.blueimage.de). The blue image GmbH Germany assumes no liability for the correctness of this documentation.

# Contents

<b>1</b>	<b>Installation of a Shared Printer</b>	<b>4</b>
1.1	Installation . . . . .	4
1.2	Configuration of the Print Driver at Server . . . . .	4
1.3	Share Printer at Server . . . . .	5
1.4	Installation of Print Driver at Client . . . . .	5
1.5	Installation of the InterCafe Virtual Printer at Client . . . . .	5
1.6	Settings at Client / Kiosk . . . . .	6
1.6.1	Settings at Server . . . . .	7
<b>2</b>	<b>Installation of a Network or Kiosk Printer</b>	<b>8</b>
2.1	Installation . . . . .	8
2.2	Configuration of the Print Driver at Client . . . . .	8
2.3	Settings at Client / Kiosk . . . . .	9
2.4	Settings at Server . . . . .	9
<b>3</b>	<b>FAQ - Frequently Asked Questions</b>	<b>11</b>

## Chapter 1

# Installation of a Shared Printer

The manual for the Print Manager explains the configuration of print drivers for the Print Manager in InterCafe 2004. The Print Manager includes a Preview with price settings.

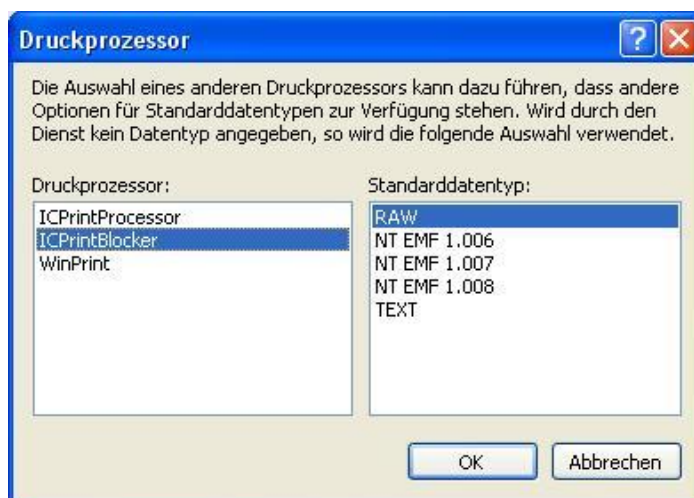
The printer at the Server needs to be shared with the other computers in the network. Please check if the printer has been installed correctly and that the print driver is not set to "Paused".

### 1.1 Installation

Please install the print driver as described in the manual for your printer. Print a test page to make sure that the printer has been installed successfully.

### 1.2 Configuration of the Print Driver at Server

To avoid free printing you need to change the print processor of your printer. Go to the Properties of your printer (right mouse click on printer) choose *Expanded* and click on *Print Processor....*



Choose *ICPrintBlocker* and (RAW-Mode). With this you can avoid free printing on this printer.

This print processor is compatible to the standard Windows print processor *WinPrint*. If your printer needs a different print processor you should at least try the *ICPrintBlocker*. In case that you should not be able to print from the Clients after having set the *ICPrintBlocker* please reset all settings to the standard print processor.

*Notice:* If you want to print locally on this printer you need to install this printer twice.

### 1.3 Share Printer at Server

Share the printer in the network. Depending on the Operating System you might need to pay attention to the policies of the users. For more information please refer to [Online-Help of Microsoft Windows](#).



### 1.4 Installation of Print Driver at Client

Install the printer by double clicking on the printer in the network neighbourhood or by adding the printer through the Control Panel.

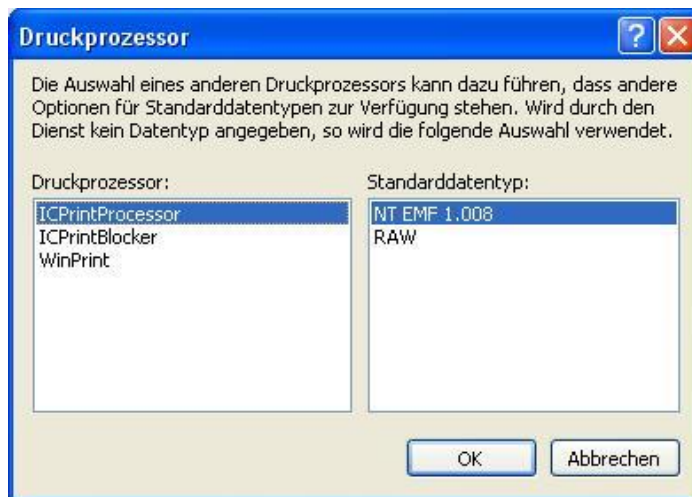
### 1.5 Installation of the InterCafe Virtual Printer at Client

In addition to your normal printer you need to install the InterCafe Virtual Printer. Click on *Add Printer* in the *Control Panel*. Choose *Create a new Port* and specify *Local Port*.

Enter `local Port` as name. Click on *Disk...* You will find the drivers in the *InterCafe* or the *InterCafe Client* folder. Carefully choose the correct driver (there are different ones for Windows XP and Windows 2000). Set this printer as standard printer at the Client.

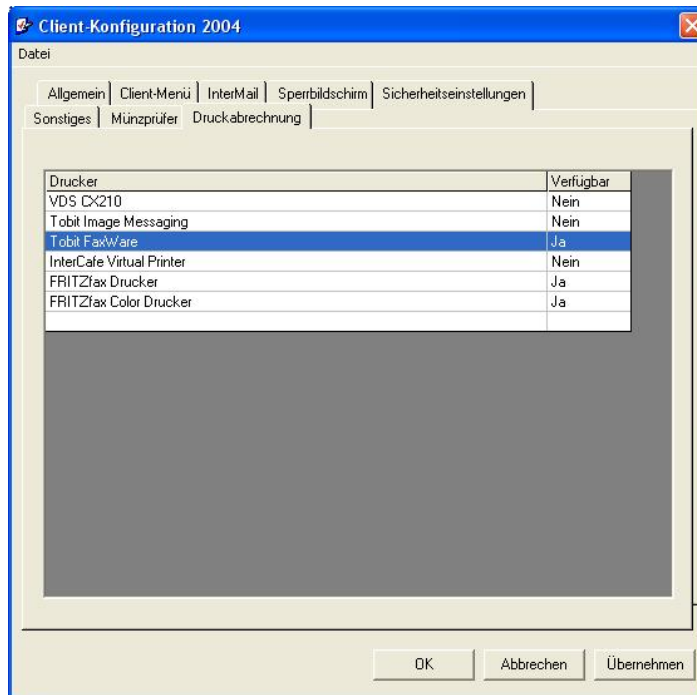


After the installation you need to change the *Print Processor*. Choose *ICPrintProcessor* with *NT EMF 1.008*.



## 1.6 Settings at Client / Kiosk

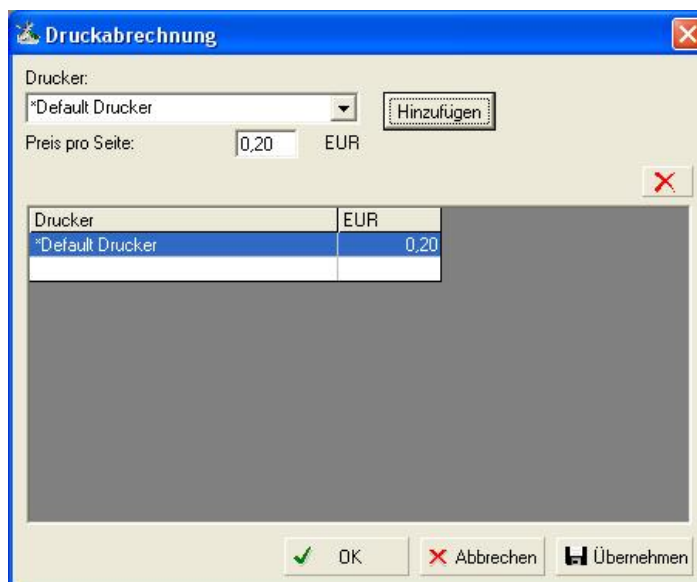
Go to the Client Configuration of InterCafe or the Kiosk-Configuration or InterCafe Kiosk.



Set all printers that you want to offer to the customers to *YES*. Set the InterCafe Virtual Printer to *No*.

### 1.6.1 Settings at Server

Start the InterCafe 2004 Server Software and go to *Settings* → *Tariffs* → *Print Manager*.



Choose a printer and enter the price you wish to charge per page. Click on *Add* to add the printer to the list. If you do not want to have different prices for different printers or if you have one printer only you can enter a price for the *\*Default-Printer*.

*Notice:* If a printer cannot be found the Print Manager will automatically use the price of the *\*Default-Printer*.

## Chapter 2

# Installation of a Network or Kiosk Printer

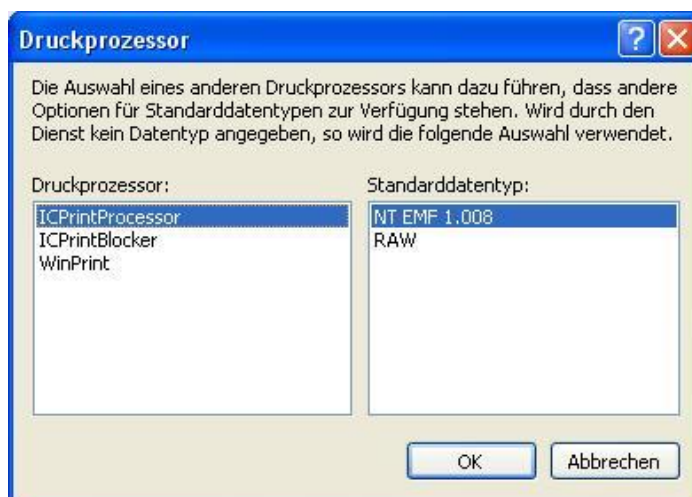
This part of the manual describes the installation of the Print Drivers for *real* network printers, printers that have their own Ethernet Interface or a Printserver included. If your printer is connected to the Server please read *Installation of a Shared Printer*. Please check if the printer has been installed correctly and that the print driver is not set to "Paused". If this doesn't work for you please install the print manager by using the *InterCafe Virtual Printer* as described before.

### 2.1 Installation

Please install the print driver as described in the manual for your printer. Print a test page to make sure that the printer has been installed successfully.

### 2.2 Configuration of the Print Driver at Client

To avoid free printing you need to change the print processor of your printer. Go to the Properties of your printer (right mouse click on printer) choose *Expanded* and click on *Print Processor....*

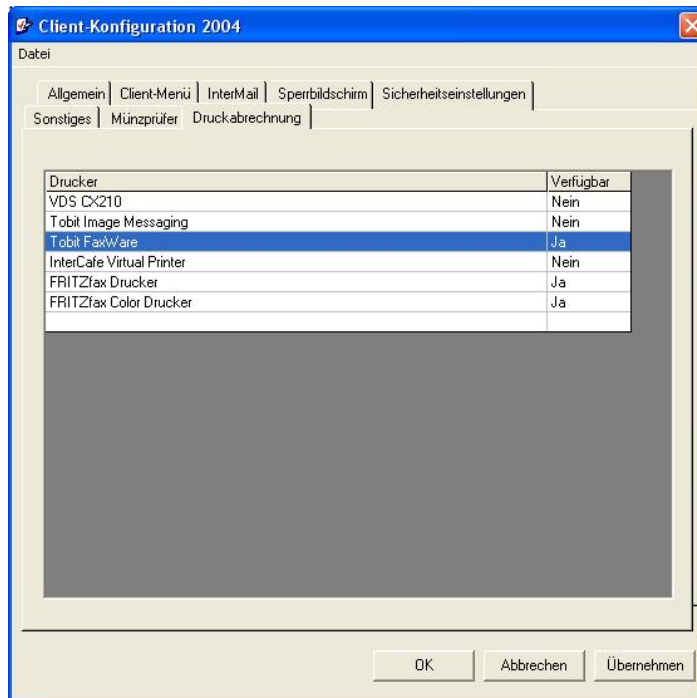




Choose *ICPrintProcessor* with *NT EMF 1.008*.

## 2.3 Settings at Client / Kiosk

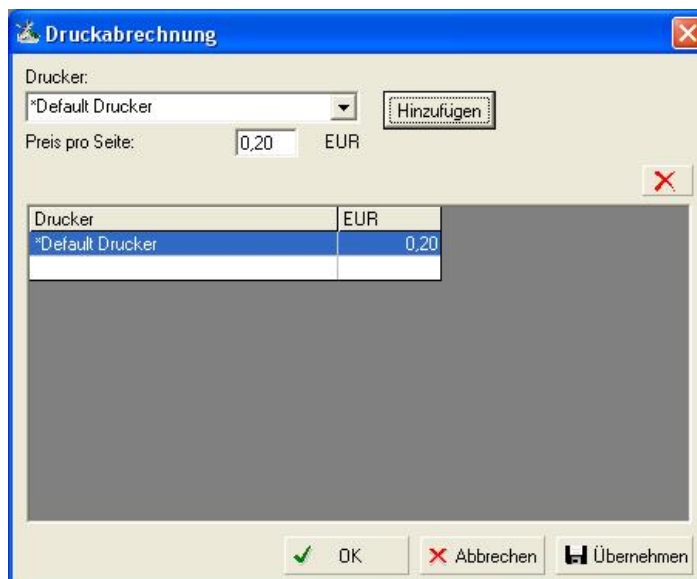
Go to the Client Configuration of InterCafe or the Kiosk-Configuration or InterCafe Kiosk.



Set all printers that you want to offer to the customers to *YES*.

## 2.4 Settings at Server

Start the InterCafe 2004 Server Software and go to *Settings* → *Tariffs* → *Print Manager*.



Choose a printer and enter the price you wish to charge per page. Click on *Add* to add the printer to the list. If you do not want to have different prices for different printers or if you have one printer only you can enter a price for the *\*Default-Printer*.

*Notice:* If a printer cannot be found the Print Manager will automatically use the price of the *\*Default-Printer*.

## Chapter 3

# FAQ - Frequently Asked Questions

### **There is no preview at the Client**

The print processor at the Client needs to be set to *ICPrintProcessor*.

### **There are no printers in the preview**

Check if you have set a price for this printer in the tariff settings at the Server. Define a price for the *\*Default* Printer. All printers that you wish to offer the Customers for printing at the Clients need to be set to YES in the Client Configuration (Kiosk Configuration in Kiosk Version).

### **Does the InterCafe Virtual Printer need to be installed at the Server, too?**

No, only at the Clients.

### **Which printer do I have to use as standard printer at the Clients?**

The InterCafe Virtual Printer.

### **Which printer do the customers need to choose when printing from the Internet Explorer for example?**

The InterCafe Virtual Printer.

### **Why does printing from the Server not work any more?**

You have set the Print Processor to *ICPrintblocker*. To print at the Server you need to install the printer a second time. Do *not* share this second printer in the network!

### **How can B&W and color prints be charged with different prices?**

1. Install the printer at the Server.
2. Rename the printer so that the name indicates that this is the *black and white printer*.
3. Set the printout to *black and white* in the options of the printer.
4. Share this printer in the network.

5. Install the printer for a second time. Go to the Control Panel to Printers & Fax devices and add a new printer by using the same drivers and settings as the first printer.
6. Rename the printer so that the name indicates that this is the *color printer*.
7. Set the printout to *color* in the options of the printer.
8. Share this printer in the network.
9. Now finish up by following the regular steps for setting up the Print Manager.