



## **InterCafe 2004**

Payment Terminal

#### **InterCafe 2004**

This manual and the appendant software belong to blue image GmbH Germany and are subject to the appendant license agreements and copyright regulations.

© 2004 blue image GmbH  
Manual Version of July 27, 2006.

#### **Important Notice:**

The software is constantly being expanded and improved. Therefore it is possible that this manual is not yet showing all functions of the software. Please inform yourself about new versions of the manual on our homepage [www.blueimage.de](http://www.blueimage.de). The blue image GmbH Germany assumes no liability for the correctness of this documentation.

# Contents

<b>1</b>	<b>Payment Terminal</b>	<b>4</b>
1.1	System requirements . . . . .	4
1.1.1	Hardware requirements . . . . .	4
1.1.2	Software requirements . . . . .	4
1.2	Installation of the Payment Terminal . . . . .	5
1.2.1	Start the installation process . . . . .	5
1.2.2	Installation process . . . . .	5
1.3	Configuration . . . . .	5
1.3.1	Coin Acceptor . . . . .	5
1.3.2	Configuration . . . . .	6
1.3.3	View . . . . .	7
1.3.4	Printer . . . . .	8
1.3.5	LoginCode Printout . . . . .	9
1.3.6	Member Account Printout . . . . .	9
1.3.7	Bill Acceptor . . . . .	10
1.3.8	Computer Groups . . . . .	10
1.4	Operation of Payment Terminal . . . . .	11
1.4.1	Instructions for the owner . . . . .	11
1.4.2	Instructions for the customer . . . . .	11

## Chapter 1

# Payment Terminal

This manual describes the configuration of the Payment Terminal and the appendand hardware like coin acceptor, bill acceptor and receipt printer.

### 1.1 System requirements

#### 1.1.1 Hardware requirements

The Payment Terminal computer should meet the following minimum requirements:

- PC (IBM compatible) with 800 MHz (recommended 1 GHz)
- 128 MB main memory (recommended 256 MB)
- screen resolution: 1024x768 pixel
- 32 Bit color depth

You need a TCP/IP connection between the Payment Terminal and the Server PC on port 8750 TCP.

Depending on the operating system, number of clients and additional equipment you might need better hardware.

#### 1.1.2 Software requirements

InterCafe 2004 works with Windows 98, Windows NT 4.0, Windows 2000 and Windows XP. For the use of the Print Manager Windows 2000/XP is required. For the use of InterCafe 2004 you do **not** need a server operating system (e.g. Windows 2003 Server). The TCP/IP network protocol is required.

## 1.2 Installation of the Payment Terminal

### 1.2.1 Start the installation process

To Install InterCafe 2004 you need Administrator rights on Windows NT/XP/2000.

#### Download the installation files

Download the InterCafe 2004 Payment Terminal software from [www.internetcafe-software.de](http://www.internetcafe-software.de) from the download area.

Start the installation process by executing the file `PaymentTerminalSetup.exe`.

### 1.2.2 Installation process

After starting the installation it might be necessary to restart the "Installation Wizard". This depends on the previous installed version of this wizard.

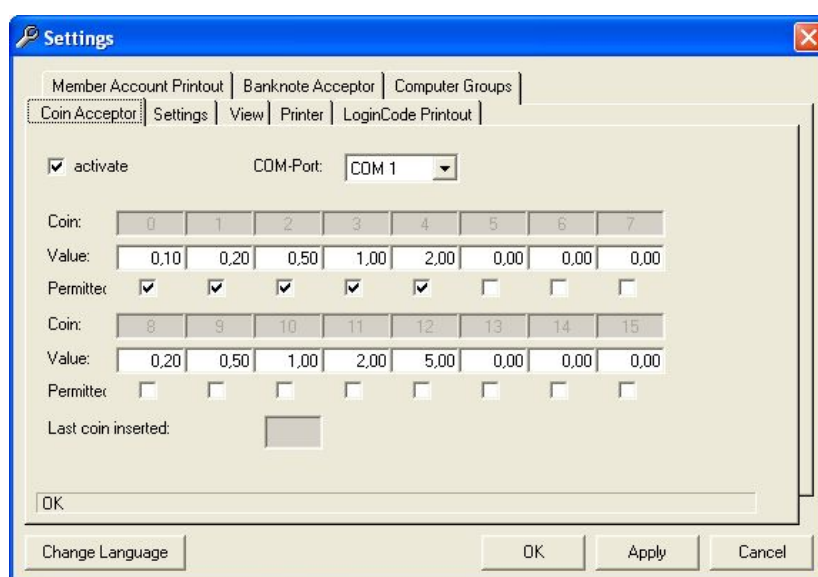
After starting the installation you will see the welcome screen. Follow the instructions on the screen.

## 1.3 Configuration

In this chapter you will get more information about the configuration of the Payment Terminal. You can start the configuration by clicking on *Start Menu* → *Programs* → *InterCafe Payment Terminal* → *Payment Terminal Configuration*.

### 1.3.1 Coin Acceptor

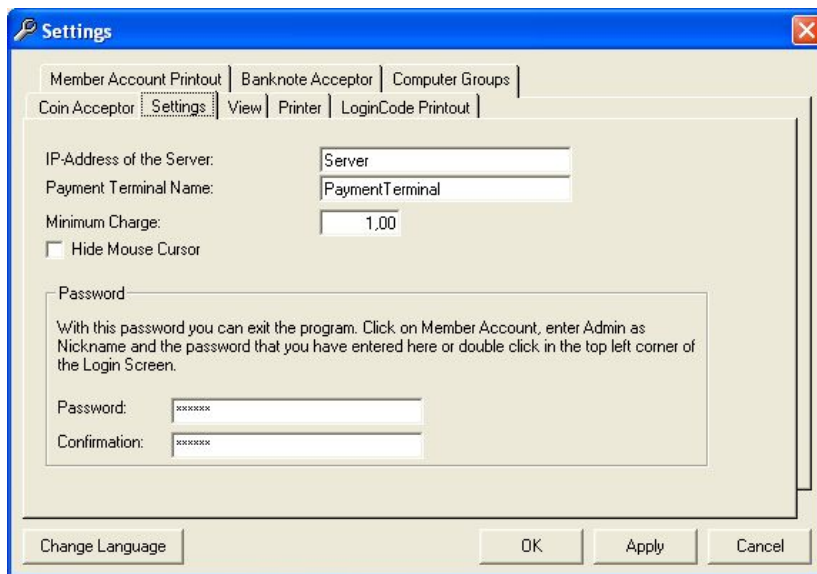
Use the tab *Coin Acceptor*. You need a coin acceptor with the MDB protocol (COM 200, COM 300 or COM 400), because the Payment Terminal sometimes needs to lock the acceptance of coins.



Choose the COM port to which the coin acceptor is connected. Insert all coins you wish to accept and enter the value into the the field of the coin. Activate the option **Permitted** of each coin you wish to accept. Do not forget to activate the coin acceptor by clicking at the **Activate** option at the top.

### 1.3.2 Configuration

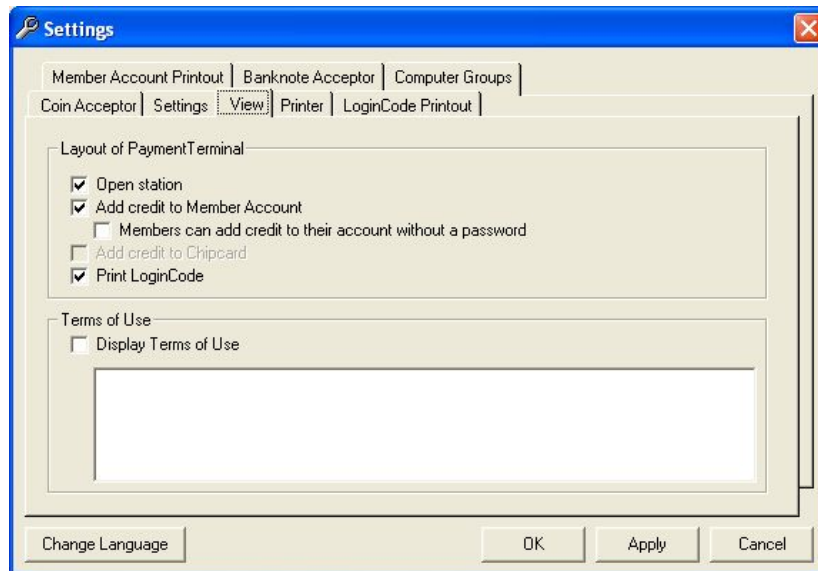
Here you can make the main settings for the Payment Terminal.



- *IP address of the Server PC*  
Enter the IP address or computer name of the Server PC.
- *Payment Terminal Name*  
Here you can enter a name for this Payment Terminal. The name will be used for the statistics.
- *Minimum Charge*  
Define the minimum charge. The customer has to insert this amount to choose an option.
- *Hide Mouse Cursor*  
If you are using a touch screen, you can use this option to hide the mouse cursor.
- *Password*  
Enter the password wich is needed to exit the Payment Terminal software.

### 1.3.3 View

At this tab you can define which options the customer can choose. You can also define your Terms of Use and decide if they shall be displayed to the customer.



#### Layout of Payment Terminal

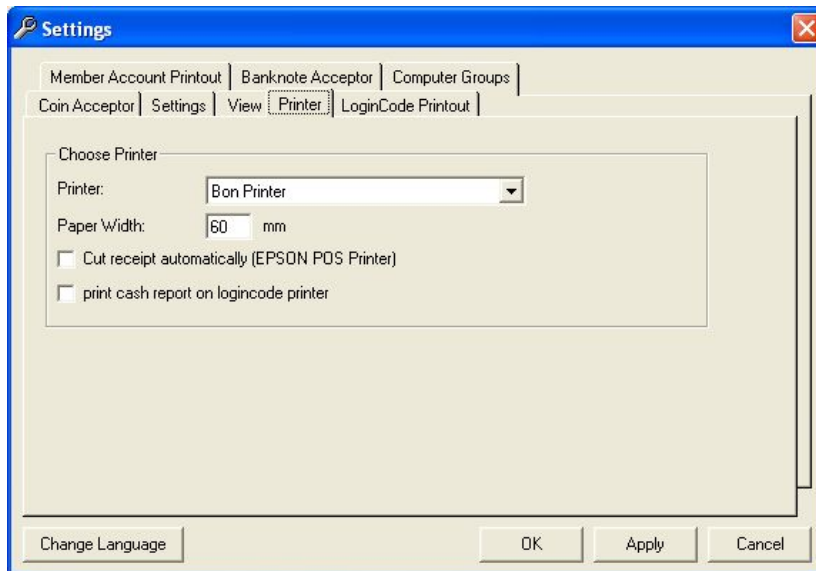
- *Open Station*  
The customer has the ability to choose from all free stations, to activate a specific station for the amount he has inserted.
- *Add credit to Member Account*  
The customer can create a new member account or add credit to an existing member account. If you activate the option *Members can add credit to their account without a password* the customers do not need to enter their password to add credit.
- *Add credit to Chipcard*  
If you are using chip cards the customers can add credit to their chipcards.
- *Print LoginCode*  
A LoginCode can be generated and printed for the value of the inserted money. The printer for the printout can be configured at the *Printer* tab.

#### Terms of Use

If you activate the option *Display Terms of Use* the customer has to accept the predefined Terms of Use before he can use the Payment Terminal.

### 1.3.4 Printer

Define the printer that is used for the printing of LoginCodes. You can also decide whether a cash report should be printed automatically on the LoginCode printer.

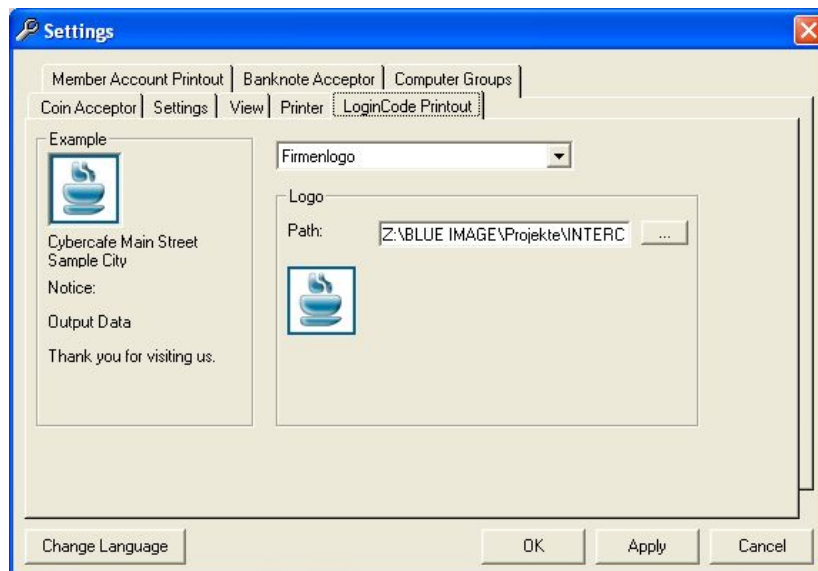


- *Printer*  
Choose your receipt printer on which the LoginCodes or cash reports will be printed.
- *Paper Width*  
Enter the printable paper width of the receipt printer.
- *Cut receipt automatically (EPSON POS Printer)*  
For EPSON-compatible printers the Payment Terminal can send an automatic cut command to the printer. Other manufacturers mostly use their printer driver to directly send the cut command.
- *Print cash report on LoginCode printer*  
If you wish to print a cash report automatically on the LoginCode printer during the balancing of your cash, you need to activate this option.



### 1.3.5 LoginCode Printout

Here you can define the layout of the LoginCode printout.



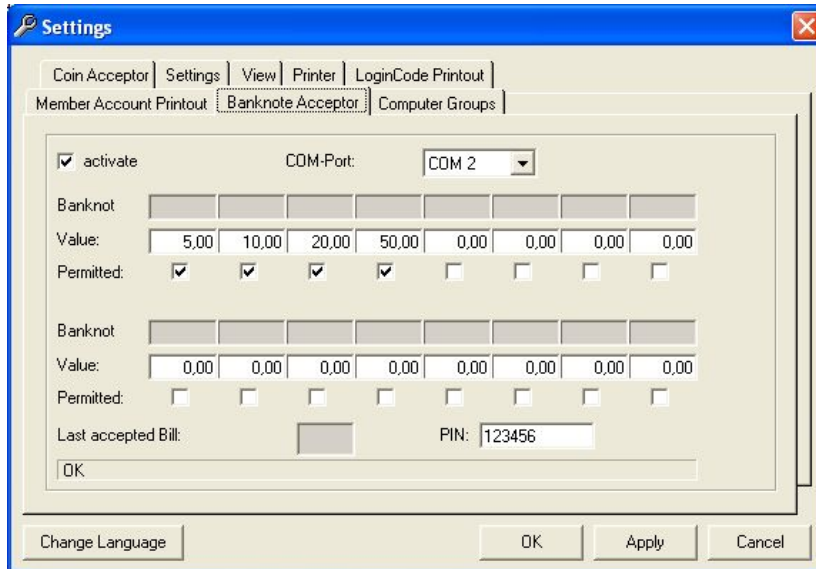
- *Company Logo*  
Enter the path and filename of an image file that contains the logo which you want to print on the LoginCode.
- *Header*  
The text that will be printed directly after the company logo.
- *Notice*  
The notice will be printed previous to the output data. Here you can add a reference to your Terms of Use.
- *Output Data*  
You can define the font settings for the output data (LoginCode).
- *Footer*  
The footer will be printed at the end of the printout.

### 1.3.6 Member Account Printout

The configuration of the *Member Account Printout* is analog to the *LoginCode Printout*.

### 1.3.7 Bill Acceptor

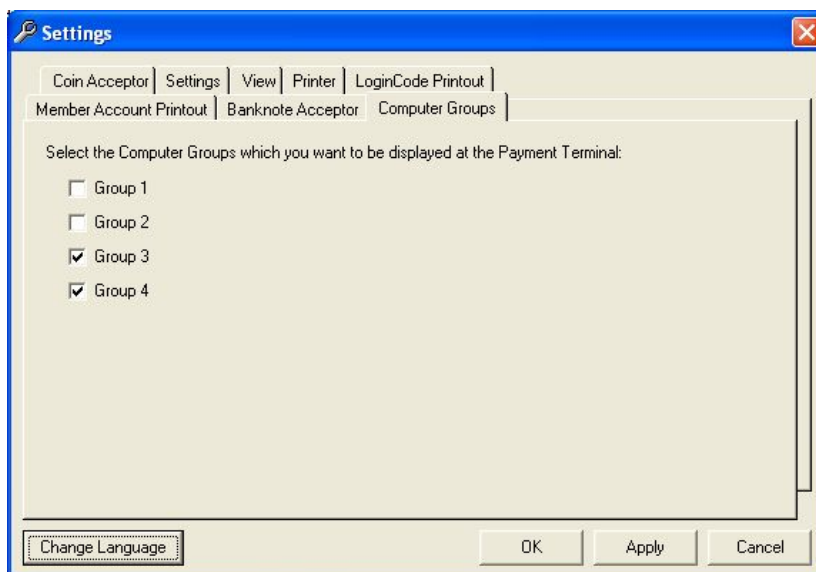
In the tab Bill Acceptor you can configure your bill acceptor. Ensure that you are not using the same COM port that is used for the coin acceptor. For the use of coin and bill acceptor at the same time you need two COM ports.



For the configuration you have to insert all types of bills you wish to accept and enter the value. You have to activate the option **Permitted** for every bill you wish to accept. Do not forget to activate your bill acceptor with the option **Activate**.

### 1.3.8 Computer Groups

In the tab **Computer Groups** you can define which groups of computers are being displayed at the Payment Terminal.



With this option you can exclude computer groups from the Payment Terminal. These groups cannot be activated through the Payment Terminal. The classification of computers to computer groups can be made at the InterCafe Server.

## 1.4 Operation of Payment Terminal

This chapter explains the daily use of the Payment Terminal for the owner and the customer.

### 1.4.1 Instructions for the owner

#### Starting the Payment Terminal

You can start the Payment Terminal by clicking on *Start menu* → *InterCafe Payment Terminal* → *Payment Terminal*. If you wish to start the program automatically at the windows startup, copy the link *Payment Terminal* into the autostart folder of the Start Menu.

#### Cash Balance

First you have to click twice into the upper left corner of the Payment Terminal Window. In the following dialog you have to choose **Cash balance** and enter the password which you have defined in the Payment Terminal configuration.

In the dialog you will see the current cash position and the date of the last cash balance. Confirm the dialog with **Cash Balance**. You can view the statistic at the InterCafe Server or with an optional statistic tool.

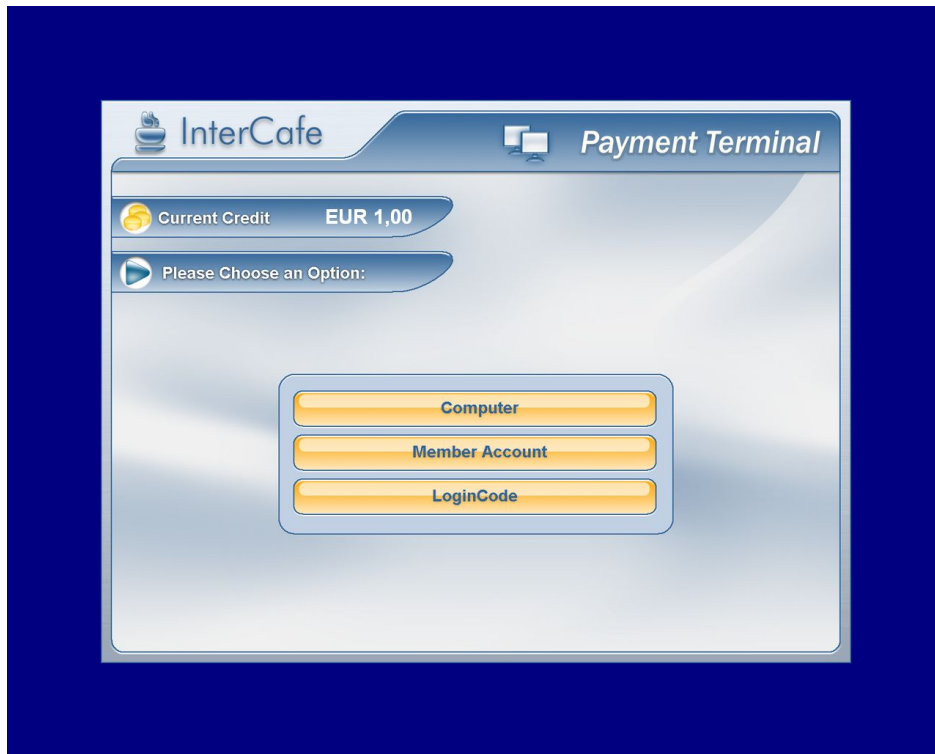
#### Exiting the Payment Terminal

To exit the Payment Terminal you have to click twice into the upper left corner of the Payment Terminal Window. In the following dialog you have to choose **End Program** and enter the password which you have defined in the configuration of the Payment Terminal.

### 1.4.2 Instructions for the customer

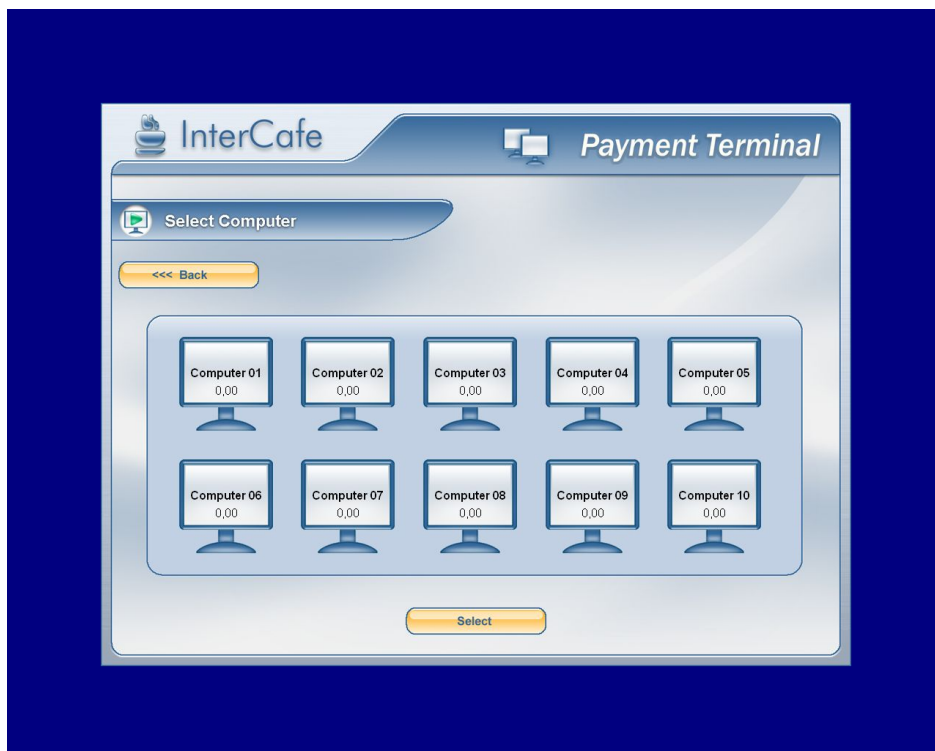
#### Startup Screen

The customer is asked to insert money at the Login. After the customer has inserted enough money (minimum charge) he has the opportunity to choose between different options.



The options depend on the configuration of the Payment Terminal and the modules you have registered.

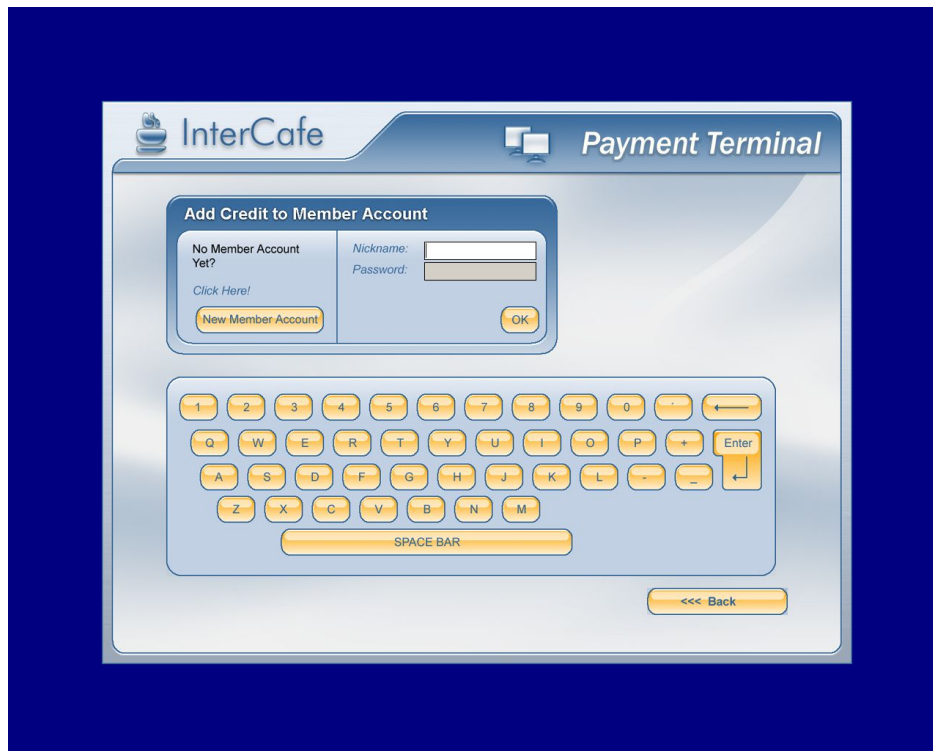
### Select Computer



The customer can choose from the available stations. The chosen station will be activated with the amount of the inserted money.

### Member Account

In this menu the customer has the opportunity to create a new Member Account or add credit to an existing Member Account.



The customer has to enter valid account information. It is also possible to accept account information without a password (depending on the Payment Terminal Configuration).

### ChipCard

The customer can add credit to his chipcard.

### Print LoginCode

Create and print a LoginCode with the value of the inserted money.

### Error Messages

If there is no connection to the Server PC or the Payment Terminal loses an existing connection it is not possible to insert coins or bills until a new connection has been established. The customer gets a message that he has to contact the staff.